

# 552

Pitch 25,4 mm

H= 12,7 mm



552 FT

552 FT *One track Belt*

552 FTT

552 PT

552 PT *One track Belt*

552 GT

552 GT *Side indent*




## 552 FTT

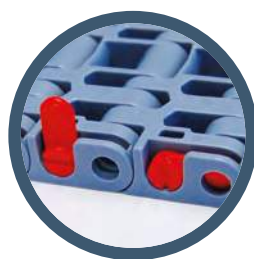
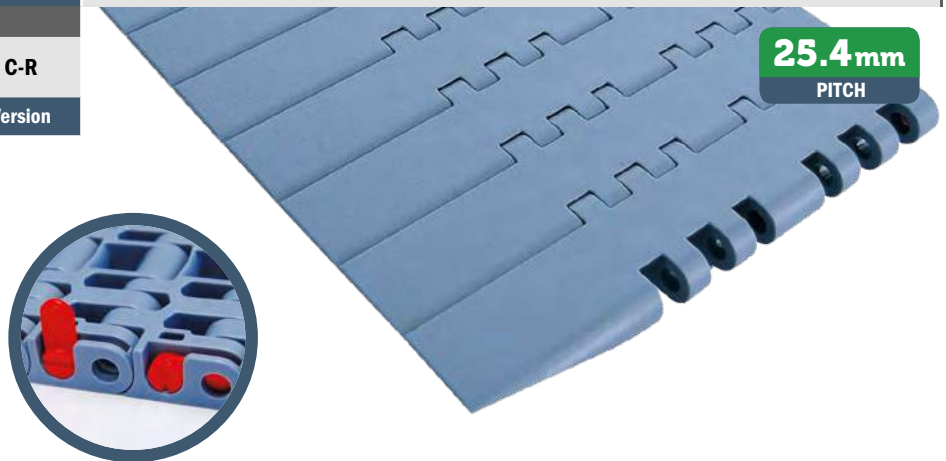
Tappeto Modulare 552 FTT, H=12,7  
Modular Belt Series 552 FTT, H=12,7 / Modulare Mattenkette 552 FTT, H=12,7

CODE STRUCTURE GUIDE			
(Example)			
<b>5346</b>	<b>01</b>	<b>9450</b>	<b>C-R</b>
Series	*Material	Width	Version

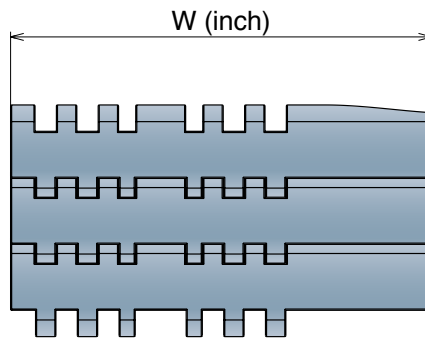
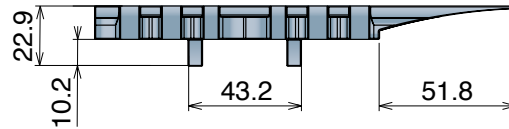
Backflex radius min.: 25 mm

**25.4 mm**  
PITCH

-   
pg. 279
-   
pg. 516->524
-   
pg. 493

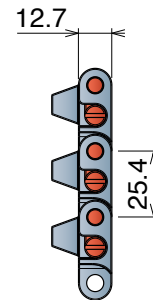


### 552 FTT - DX Version



### K450 / K750

Series	Material	Width	Version	Total width
5346	*	9450	C - R	160.3
5346	*	9750	C - R	237.4



#### \*Material

#### LFA - Code 01

Low friction Acetal

Max w. load: 41500 N/m  
Weight: 13,5 kg/m<sup>2</sup>  
Temp. range dry: -40÷80 °C  
Temp. range wet: -40÷65 °C  
Pin material: PBT white

#### MX - Code 03

Performance PBT

Max w. load: 33500 N/m  
Weight: 13,0 kg/m<sup>2</sup>  
Temp. range dry: -40÷120 °C  
Temp. range wet: -40÷60 °C  
Pin material: POM grey

#### MWX - Code 17

Polyamide Composite

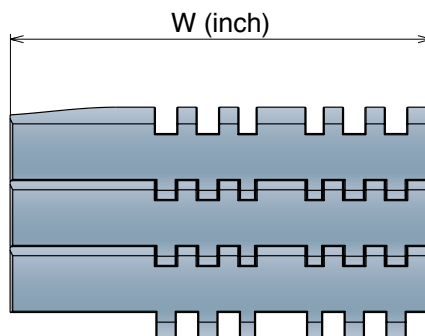
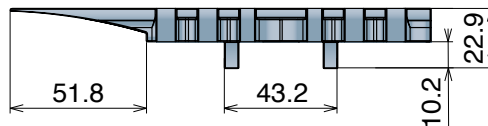
Max w. load: 41500 N/m  
Weight: 14,0 kg/m<sup>2</sup>  
Temp. range dry: -40÷104 °C  
Temp. range wet: NR  
Pin material: PBT white

#### MPX - Code 25

Lubricated Acetal

Max w. load: 41500 N/m  
Weight: 13,5 kg/m<sup>2</sup>  
Temp. range dry: -40÷80 °C  
Temp. range wet: -40÷65 °C  
Pin material: PBT white

### 552 FTT - SX Version



### K450 / K750

Series	Material	Width	Version	Total width
5346	*	9450	C - L	160.3
5346	*	9750	C - L	237.4

